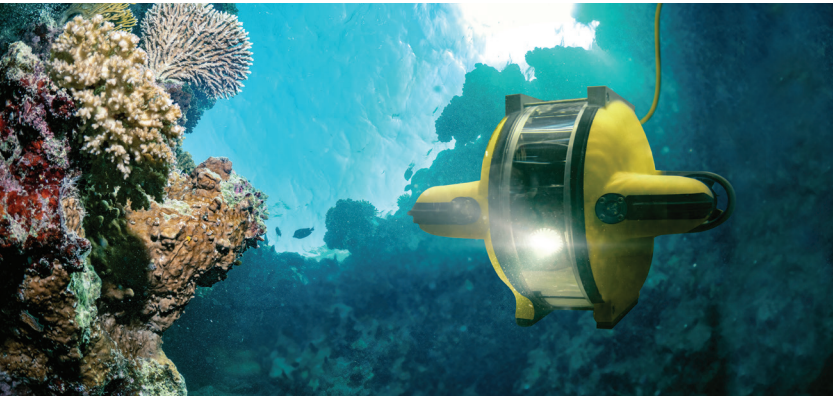


Marine interconnect solutions



SOURIAU - SUNBANK
Connection Technologies

An underwater photograph showing the sun's rays filtering through the water surface, creating a bright, shimmering effect. The water is a deep blue, and the sun is visible as a bright orange and yellow glow on the horizon. The rays of light create a starburst effect as they penetrate the water.

SOURIAU values

QUALITY & EXPERTISE

PROVEN DESIGN

EXTENSIVE RANGE



SOURIAU in the Marine Market

SOURIAU is a world leader in the harsh environment interconnect solutions market with a strong culture of operational excellence. For more than 40 years, **SOURIAU** has designed and manufactured connectors for submerged applications.

Our marine connectors have been designed to meet the highest standards of safety, for shallow or deep underwater immersion or for surface use where water exposure is frequent. They are designed to resist in a highly corrosive environment and to protect perfectly against water ingress. The ease of use is also one of the key features of this range.

SOURIAU - SUNBANK Connection Technologies is a global leader in connection technologies offering a flexible and collaborative approach to meeting our customers design, engineering and manufacturing needs when bringing new products to market.

IP68



Range availability

8 shell sizes

Shell materials: bronze or
aluminum alloy

Straight and elbow backshells

Contact current rating from
7.5A to 720A



Ship decks and inboard marine

Robust design, waterproof to IP68, MSH/MPH connectors are particularly suitable for ship decks or industrial applications requiring waterproof ratings.

Which applications?

- Surface vessel instrumentation
- Inboard marine
- Upper deck & protected rooms
- Construction industry (ex: tunneling machines, concreting, power supply units..)



MSH/MPH Series

High resistance to vibration

IP 68

Scoop proof

Five-key mechanical polarization

Easy cabling



Range availability

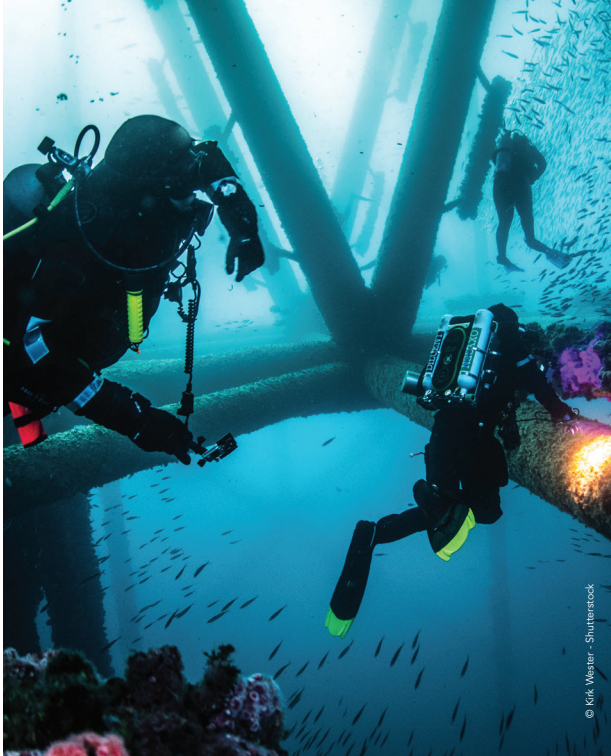
4 shell sizes

Shell material: nickel plated brass

Up to 41 contacts

Straight plug, inline receptacle or feedthrough

Signal, coaxial or triaxial contacts



Temporary water immersion solutions

TP Series has been designed to withstand harsh and aquatic environments.

Which applications?

- Onshore Oil & Gas services: geophysics, inspection or instrumentation
- Water treatment
- Civil construction
- Underwater instrumentation



TP Series

Temporary sea water immersion down to 300 meters/1,000 feet depth

High resistance to cable pull out or transverse forces

Repairable connectors with removable inserts

Easy coupling/uncoupling operation



Range availability

2 shell sizes

Shell material: high-end thermoplastic

Up to 19 contacts

Straight plug, inline or

jam nut receptacle

Overmolded cable

termination for plug and

inline receptacle



Shallow water immersion

The SWIM Series provides the most reliable solution for shallow water immersion.

Which applications?

- Ocean drones
- Commercial diving
- Buoys
- Observation Class ROVs



SWIM Series

THE connector for Shallow Water IMmersion down to 300 meters/1,000 feet depth

Designed for long term use

Reliable solution even at low pressure (no corrosion, perfect watertightness)

Keying and easy coupling

Cost effective solution

Lightweight



Range availability

5 shell sizes

Shell materials: nickel
aluminum bronze
(M series), 316L Stainless
Steel (MU Series)

Straight plug, jam-nut,
square flange, inline
receptacle, feedthrough...
Signal, coax, triax, high
power...



Deep water immersion

The M connector range meets the highest standards of safety for deep immersion.

Which applications?

- Autonomous Underwater Vehicles (AUVs)
- ROVs
- Military marine: submarines, vessels...
- Marine Renewable Energies (Tidal turbines)
- Towed arrays



M/MU* Series

High performance within deep water immersion up to **700 bar****

Extreme resistance to pull-out or transverse forces, vibration or shock

Long service life

High security thanks to two O-rings double sealing

*: U stainless steel series for marine application is now called MU series

** : depending on the model



Range availability
4 shell sizes
Straight plug, jam-nut,
square flange, inline
receptacle, feedthrough...
The same M series layouts
availability



Offshore interconnect solutions

The Superduplex connectors are suitable for service in highly corrosive underwater conditions for the longest duration.

Which applications?

- Oil & Gas service: offshore exploration
- Subsea production system for Oil & Gas
- Tidal turbines



SD Superduplex

Perfectly suited to the offshore industry

The Super Duplex material used for these connectors provides both excellent resistance to all types of corrosion and very high mechanical strengths



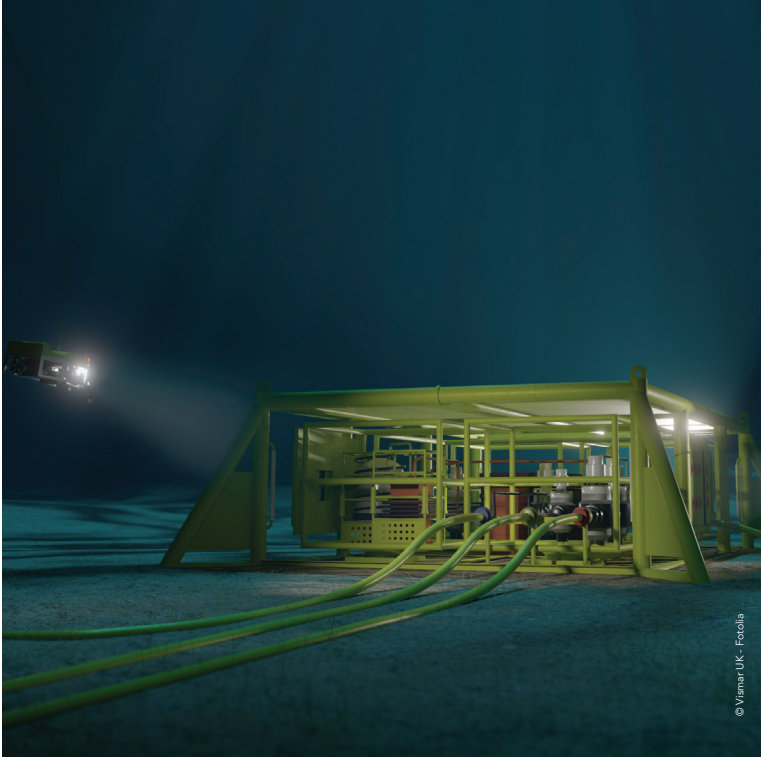
Range availability

5 shell sizes

Shell material: nickel
aluminum bronze

Straight plug, jam-nut,
square flange, inline
receptacle, feedthrough, ...

Other custom designs
(ex: quick release plug) or
materials available on
request



Deep water immersion and wet mate solutions

High performance connectors designed for **underwater coupling**.

Which applications?

- Underwater instrumentation
- Offshore underwater wellhead equipment
- Submarine

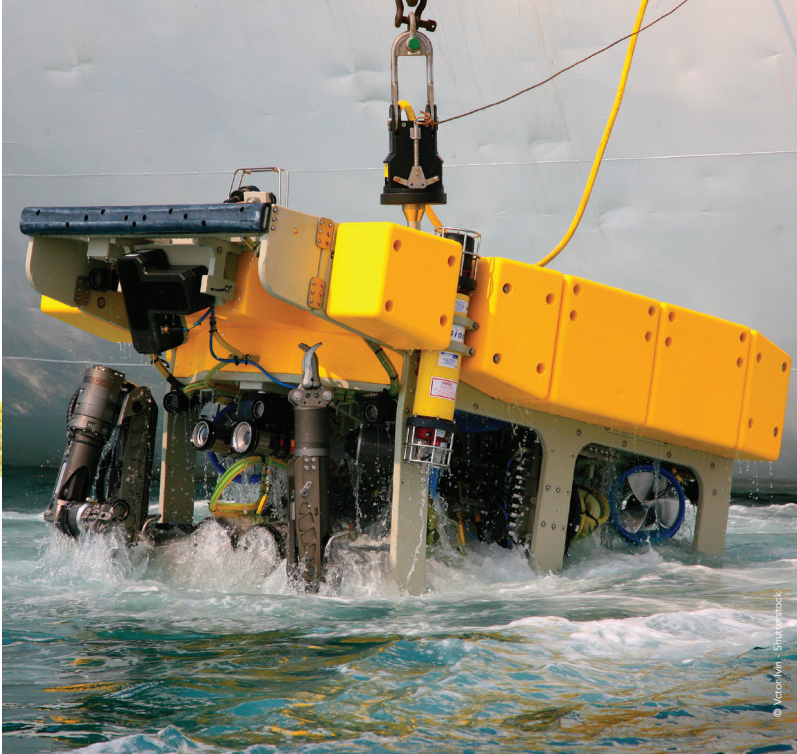
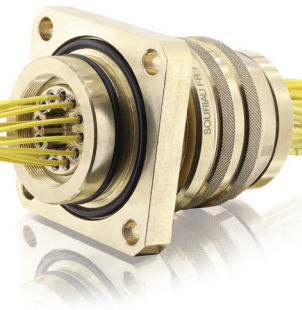


8810 Series

Underwater mateable connectors for up to 3,000 meters/10,000 feet depth (size 1,2,3,4,7)

Long-term immersion

High performance



Range availability

Based on 3 existing shell sizes:

14MO, 20MO, 24MO

Custom solutions

SOURIAU-SUNBANK Connection Technology can also offer many custom solutions in order to meet customer requirements and to fit their specific needs. Besides, we are able to test the interconnect solutions according to custom vibration profiles, temperature range or dedicated flexing and sealing requirements...

Which applications?

- Underwater datacenter
- Underwater high speed signal transmission



Optical M connectors

Watertight up to 1000m for optical or hybrid connectors

Our differentiators

■ QUALITY & EXPERTISE

Decades of know-how and expertise with an enviable track record of high quality interconnect solutions have established **SOURIAU** as one of the most trusted names in the business.

Whether for subsea or top side applications, power or signal transmission, **SOURIAU** is a brand you can rely on.

■ COMPLETE INTERCONNECT SOLUTIONS

From connectors, to overmold cable assemblies, **SOURIAU** offers a complete turnkey solution.

■ ENVIRONMENT & SAFETY

Compliance to international standards UL, IEC, RoHS, REACH...



SOURIAU: A high service level

Worldwide availability: A global network with local presence to serve our customers





SOURIAU - SUNBANK

Connection Technologies

Reliable People, Reliable Solutions

www.souriau.com

